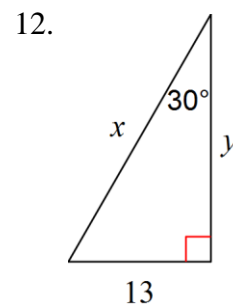
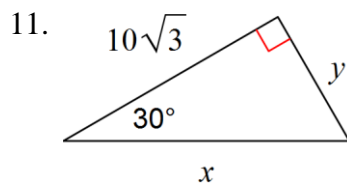
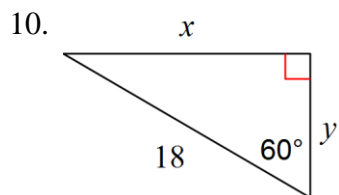
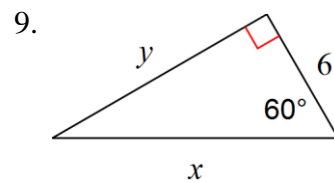
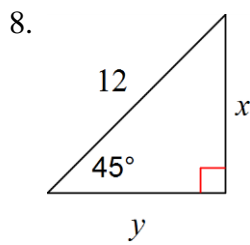
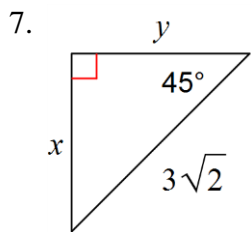
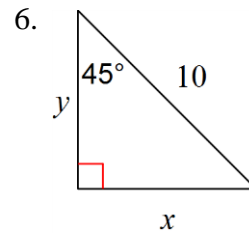
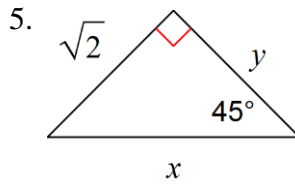
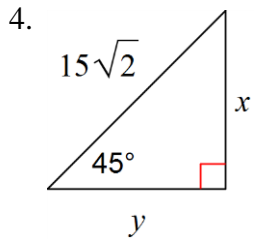
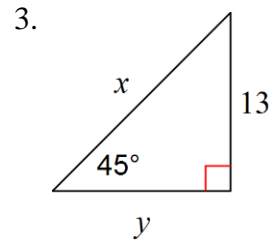
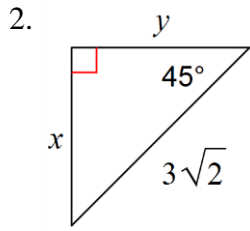
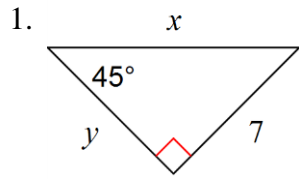


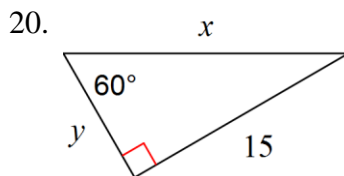
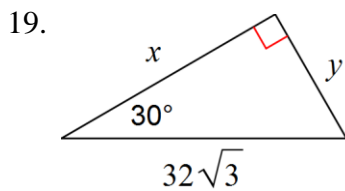
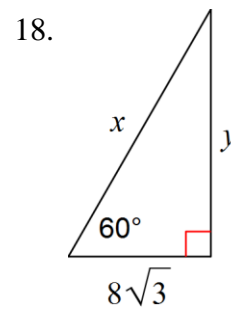
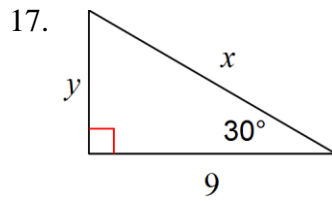
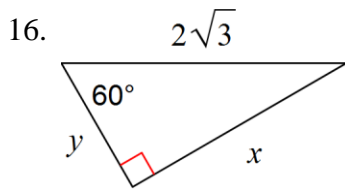
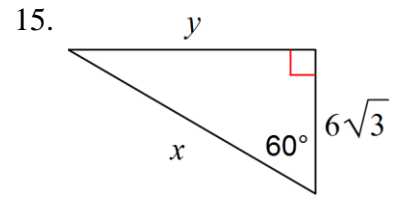
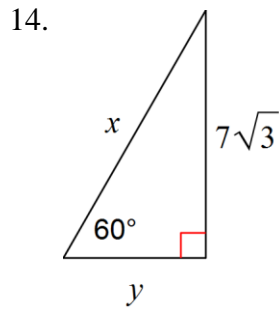
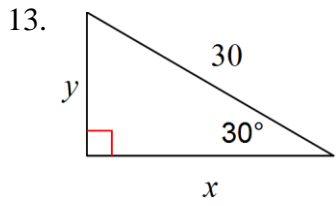
Name _____ Hour _____

Find the unknown side lengths. Write answers in simplest radical form.



Special Right Triangles #1

Find the unknown side lengths. Write answers in simplest radical form.



Classify the triangle with the given side lengths as *acute*, *right*, or *obtuse*.

21. 14, 7, 20

22. 11, 8, 9

23. 5, $\sqrt{74}$, 7

24. 3, $\sqrt{29}$, $\sqrt{38}$

25. $\sqrt{10}$, $\sqrt{8}$, $\sqrt{6}$

26. $\sqrt{13}$, 6, $5\sqrt{2}$