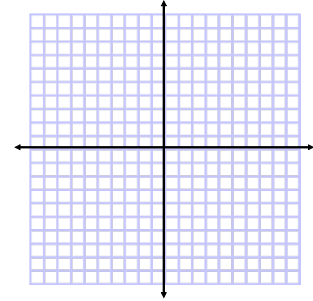


**Algebra II**  
**Section 3.3**  
**Systems of Linear Inequalities**

**Questions from Homework**

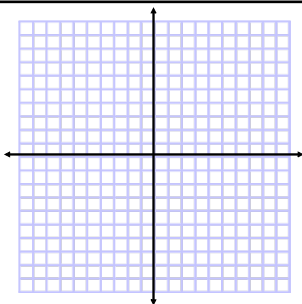


Sep 19-12:04 PM

Sep 19-12:04 PM

**Bell Ringer**

Graph  $2x - y > 4$



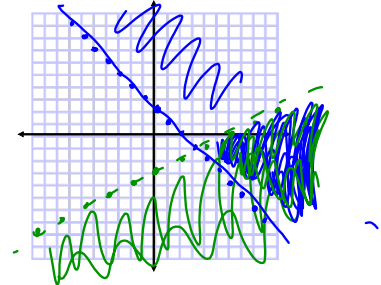
Today we are going to solve systems of inequalities.

We will graph more than one inequality on the same graph.

Graph

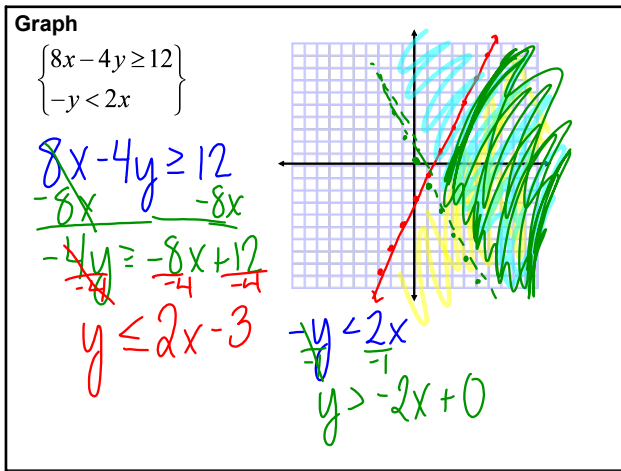
$$\begin{cases} y < \frac{1}{2}x - 3 \\ y \geq -x + 2 \end{cases}$$

$-\frac{1}{2}$

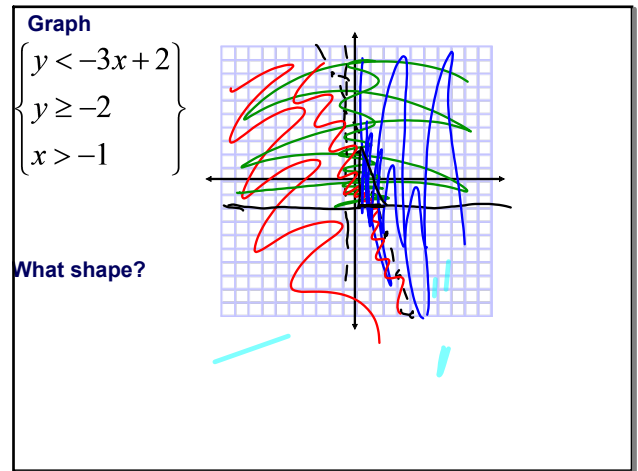


Sep 19-12:04 PM

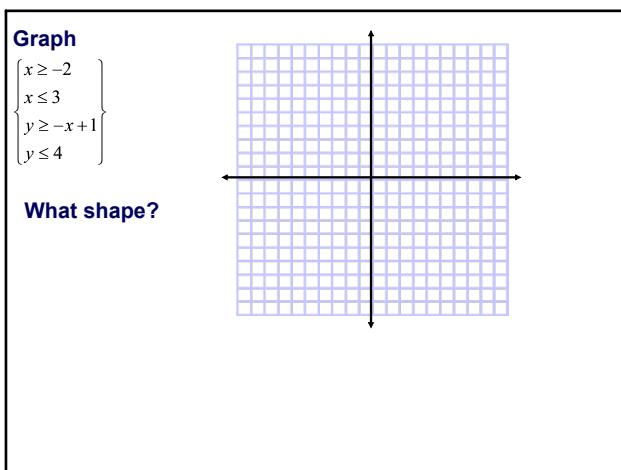
Sep 19-12:06 PM



Sep 19-12:06 PM



Sep 19-12:12 PM



Sep 19-12:14 PM

**Conclusion**

1. How do you graph a system of inequalities?
2. How many solutions do you get?
3. Questions?????

Sep 19-12:23 PM

**Assignment**  
**Systems of Inequalities Wkst**

Sep 19-12:26 PM